



■ Features

- ROHS Compliant
- High power rating
- High rejection

■ Electrical Specifications

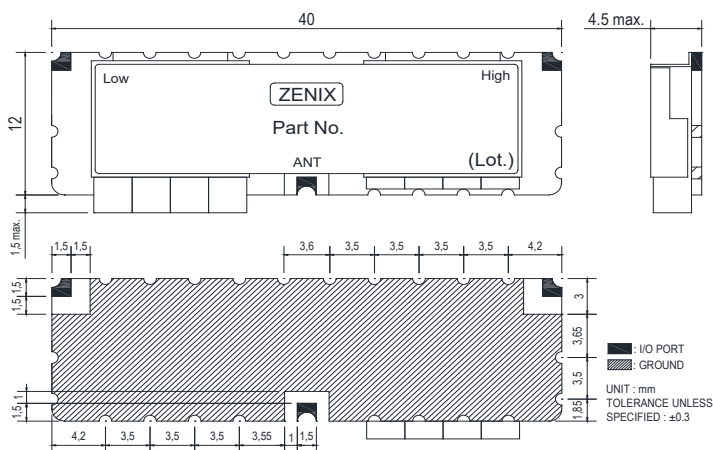
| Parameter        | Port | Frequency (MHz) | Min. | Typ.   | Max. | Unit |
|------------------|------|-----------------|------|--------|------|------|
| Center frequency | Low  | 2042.5          | -    | 2042.5 | -    | MHz  |
|                  | High | 2592.5          | -    | 2592.5 | -    | MHz  |
| Bandwidth        | Low  | 255             | 1915 | -      | 2170 | MHz  |
|                  | High | 225             | 2480 | -      | 2705 | MHz  |
| Insertion Loss   | Low  | 1915 ~ 2170     | -    | 1.3    | 2.0  | dB   |
|                  | High | 2480 ~ 2705     | -    | 1.3    | 2.0  | dB   |
| Ripple           | Low  | 1915 ~ 2170     | -    | 0.4    | 0.5  | dB   |
|                  | High | 2480 ~ 2705     | -    | 0.4    | 0.5  | dB   |
| Return Loss      | Low  | 1915 ~ 2170     | 15   | 17     | -    | dB   |
|                  | High | 2480 ~ 2705     | 15   | 17     | -    | dB   |
| Attenuation      | Low  | 2480 ~ 2705     | 35   | 37     | -    | dB   |
|                  | High | 1915 ~ 2170     | 45   | 53     | -    | dB   |

■ Maximum Ratings

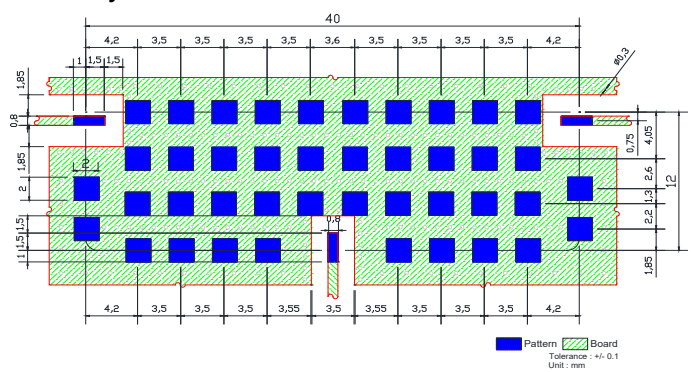
|                       |               |
|-----------------------|---------------|
| Input Power Handling  | 3Watt max.    |
| Operating Temperature | -30°C to 70°C |
| Storage Temperature   | -40°C to 95°C |

• Permanent damage may occur if any of these limits are exceeded.

■ Dimension

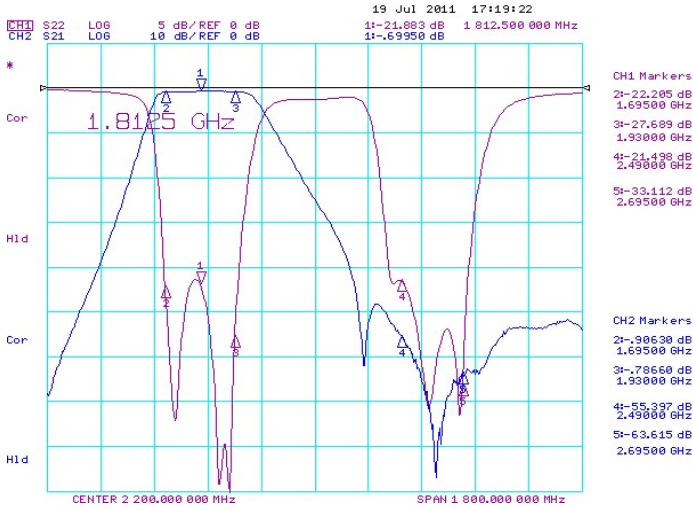


■ PCB Layout



## Typical Performance Data at 25°C

- Low ⇒ Insertion Loss, Ripple, Return Loss, Attenuation



- High ⇒ Insertion Loss, Ripple, Return Loss, Attenuation

